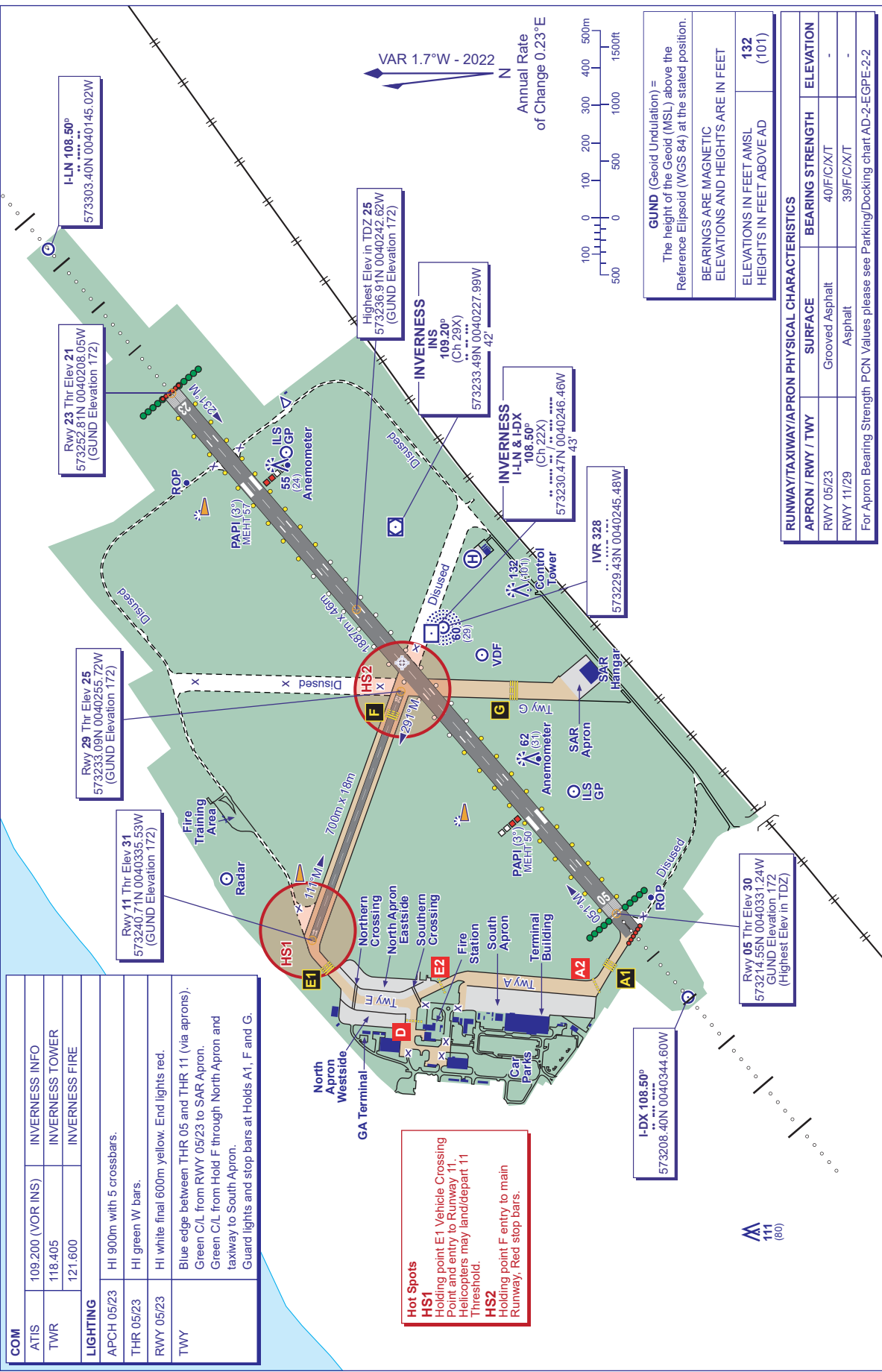


<b>COM</b>		INVERNESS INFO
ATIS	109.200 (VOR INS)	INVERNESS TOWER
TWR	118.405	INVERNESS FIRE
	121.600	
<b>LIGHTING</b>		
APCH 05/23	HI 900m with 5 crossbars.	
THR 05/23	HI green W bars.	
RWY 05/23	HI white final 600m yellow. End lights red.	
TWY	Blue edge between THR 05 and THR 11 (via aprons). Green CL from RWY 05/23 to SAR Apron. Green CL from Hold F through North Apron and taxiway to South Apron. Guard lights and stop bars at Holds A1, F and G.	

**Hot Spots**  
**HS1** Holding point E1 Vehicle Crossing Point and entry to Runway 11. Helicopters may land/depart 11 Threshold.  
**HS2** Holding point F entry to main Runway. Red stop bars.



**GUND (Geoid Undulation) =**  
 The height of the Geoid (MSL) above the Reference Ellipsoid (WGS 84) at the stated position.

BEARINGS ARE MAGNETIC	ELEVATIONS AND HEIGHTS ARE IN FEET
ELEVATIONS IN FEET AMSL	132
HEIGHTS IN FEET ABOVE AD	(101)

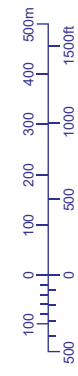
**RUNWAY/TAXIWAY/APRON PHYSICAL CHARACTERISTICS**

APRON / RWY / TWY	SURFACE	BEARING	STRENGTH	ELEVATION
RWY 05/23	Grooved Asphalt	40/F/C/X/T		-
RWY 11/29	Asphalt	39/F/C/X/T		-

For Apron Bearing Strength FCN Values please see Parking/Docking chart AD-2-EGPE-2-2

**VAR 1.7°W - 2022**

**Annual Rate of Change 0.23°E**



**CHANGE (9/20):** MAG VAR. MAG HEADINGS. BUILDINGS. ROADS. VOR/DME COORDS/ELEV. RWY 05/23 LIGHTING. TWY LIGHTING. IRVR MOVED. ROP ADDED. OBSTACLES.